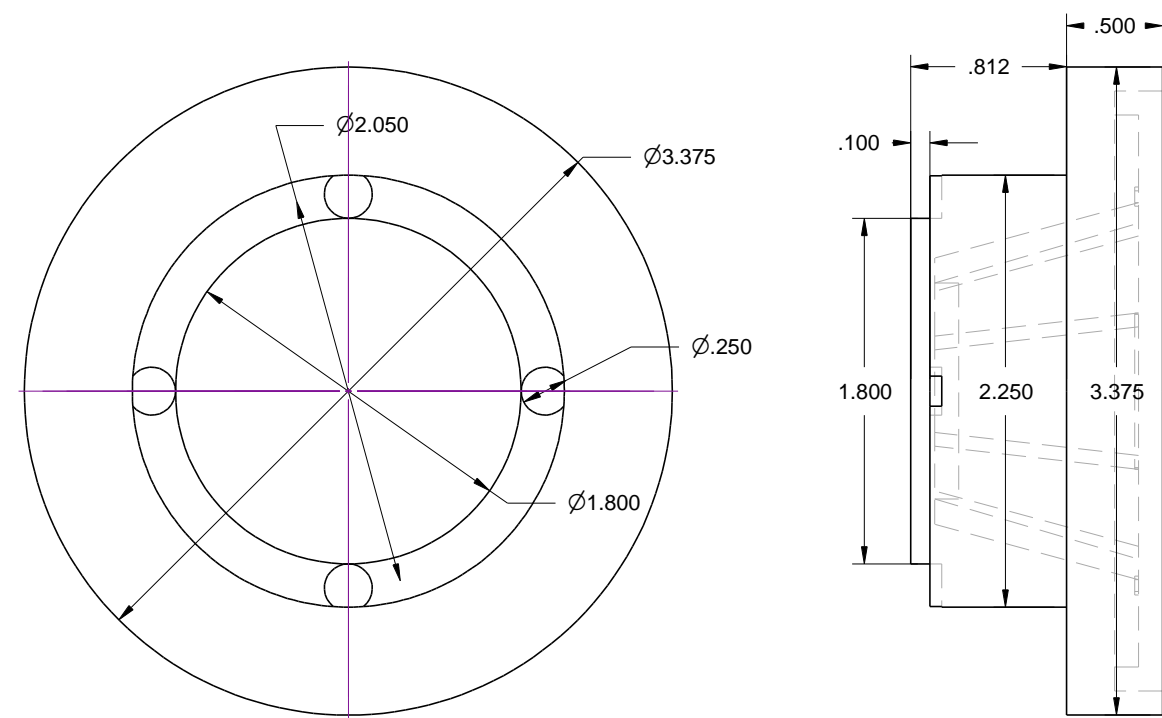


Shoulder Hub Modifications



Remove .1 in. from the edge to reduce the diameter to 1.8 in

Make 4 holes spaced 90 degrees apart .25 in in diameter .0625 deep on a diameter of 2.05 in.  
 [note: outside edge of hole extends beyond edge of shoulder hub]  
 Use an end mill cutter, or equivalent, to cut a hole with a flat bottom.

Holes are designed to mount K&J Magnetics D41-N52 magnets 1/4 in x 1/16 in size.

Warning: Use these drawings to modify your Shoulder Hub at your own risk

Copyright Media-Conversions - Released for non-commercial use ONLY!

DRAWN	DATE 1/23/2012	<div>MediaConversions</div>			
CHECKED					
QA					
MFG		SIZE C	FSCM NO.	DWG NO. shoulder hub (rear)	REV
APPROVED		SCALE			SHEET